

ACCESS



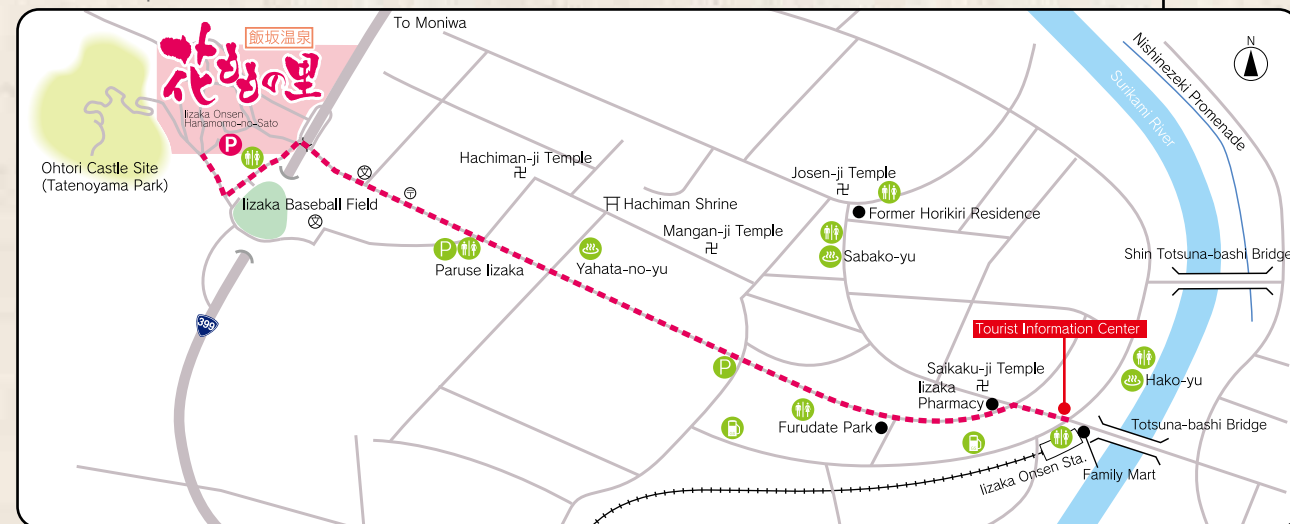
By Car

Fukushima-Iizaka IC on Tohoku Expressway Approx. 5km Approx. 10 min. by car parking lot (capacity: 100 vehicles)

By Air / Rail / Bus

Sendai Airport	Train: approx. 30 min	Sendai Sta.	Shinkansen: approx. 30 min. Bus: approx. 70 min.	Fukushima Sta.	Fukushima Kotsu Iizaka Line: approx. 25 min.	Iizaka Onsen Sta.	20 min. walk
Narita Airport	Train: approx. 60 min. Bus: approx. 90 min.	Tokyo Sta.	Shinkansen: approx. 110 min.	Fukushima Sta.	Fukushima Kotsu Iizaka Line: approx. 25 min.	Iizaka Onsen Sta.	20 min. walk
Haneda Airport	Train: approx. 30 min. Bus: approx. 60 min.	Tokyo Sta.	Shinkansen: approx. 110 min.	Fukushima Sta.	Fukushima Kotsu Iizaka Line: approx. 25 min.	Iizaka Onsen Sta.	20 min. walk

Access Map from Iizaka Onsen Sta.



For Inquiries:

Iizaka Onsen Tourism Association TEL.024-542-4241 E-mail:info@iizaka.com
Website: http://www.iizaka.com

Iizaka Onsen
Tourism Association
Official Site



Instagram
@iizakaonsen



Twitter
@iizaka-onsen



Facebook
@iizakaonsen



飯坂温泉
— いざか —

IIZAKA ONSEN
HANAMOMO NO SATO

花ももの里



The "Hanamomo-no-Sato" (Paradise of Flowering Peaches) in Iizaka Onsen hot-spring resort was launched as a joint exploratory project under the guidance of former professor Masato Yoshida of Utsunomiya University's Department of Agriculture by planting flowering peach trees in a large plot of land owned by Fukushima City. Opened in 2007, the paradise area totals some 80 ares (8,000 sq. meters) as of March 2019. Some 300 trees of 40 varieties collected from all over the world gloriously grace the garden for a month from early April to early May with lovely blossoms, transforming it into a flowery paradise.



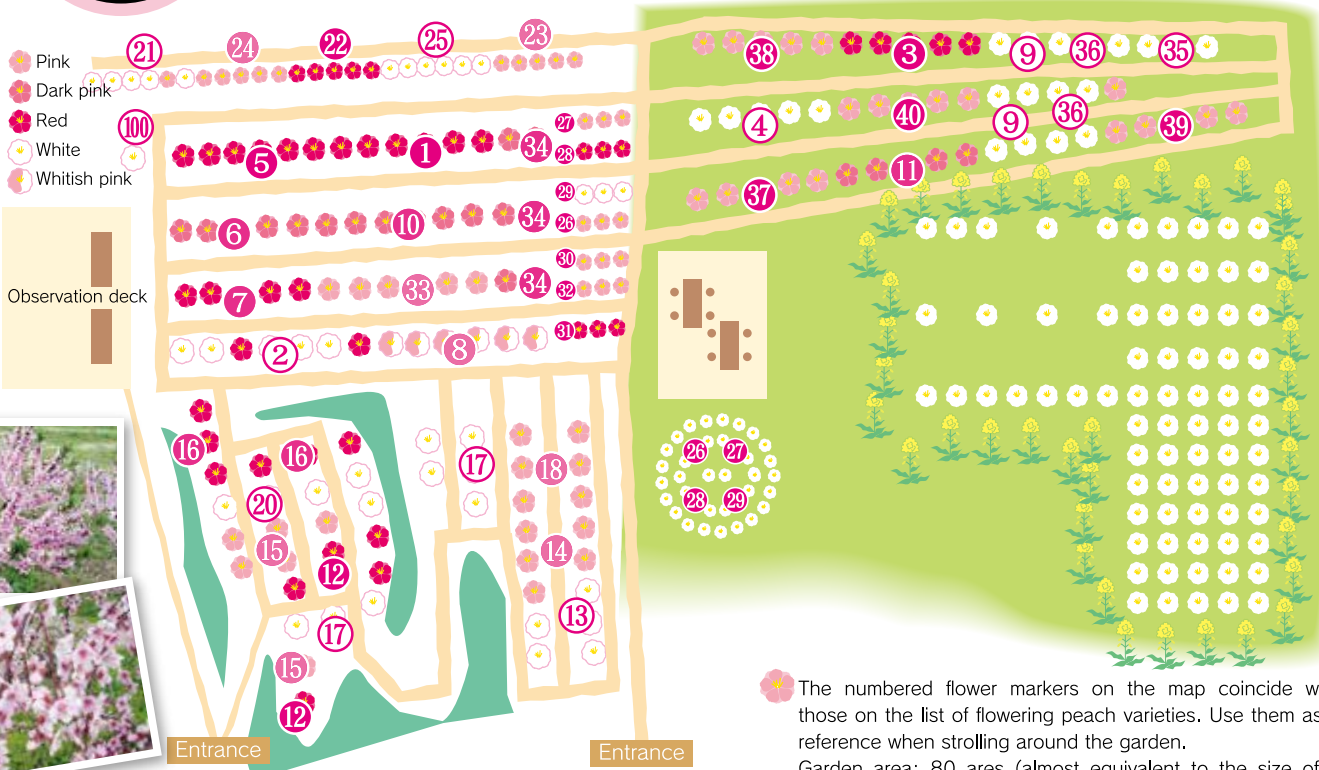


Gracefully drooping peach blossoms candidly welcome me. Their multi-colored hues make a splendid contrast with the blue sky. In Iizaka Onsen there are nine public baths. If you ask local residents who enjoy bathing there about what is the most attractive place to visit in Iizaka Onsen, it is certain that the majority will answer: "Hanamono-no-Sato."

#Iizaka Onsen Hanamono-no-Sato
#Drooping-type flowering peach
#Iizaka Onsen public baths
#Making the round of public baths in Iizaka Onsen

Garden Map

Some 40 varieties of flowering peach trees – each having its own distinct shape and blossom color – can be found within the garden. If you have taken a beautiful photo, remember to post it on the SNS after attaching the hashtag "#Iizaka Onsen Hanamono-no-Sato".



The numbered flower markers on the map coincide with those on the list of flowering peach varieties. Use them as a reference when strolling around the garden. Garden area: 80 ares (almost equivalent to the size of a football court)



What pleased me so much was that I could enjoy lovely blossoms close by even when seated. I felt as if time had so nicely slowed down. At peace with myself, I could listen to the whisper of blossoms as they gently swayed in soft breezes.

#Iizaka Onsen Hanamono-no-Sato
#Flowering peach - Pink



Pose for a photo amid peach blossoms flowering in profusion! Drooping blossoms fascinate visitors as they sway in the warm breezes. After having feasted my eyes, I parted from this paradise to satiate my appetite with the celebrated Iizaka "ramen" noodles and "emban-gyoza" (disk-shaped dumplings).

#Iizaka Onsen Hanamono-no-Sato
#Drooping-type flowering peach
#Iizaka ramen noodles
#Emban gyoza



Spring at its very best was right before my very eyes! Under the blue sky of spring was a world of red, pink and white peach flowers exquisitely enhanced by the yellow of forsythia blossoms. Next time, I'll visit this garden during the season when the peaches are ripe for picking.

#Iizaka Onsen Hanamono-no-Sato
#Flowering peach - Red
#Flowering peach - Pink
#Flowering peach - White
#Forsythia blossoms
#Fruit picking



Flowering peaches come in a wide variety of tree shapes, blossom colors and petals... Simply stated they are all flowering peaches, but each and every one radiates with its own individual personality. As this flowery paradise contains as many as 40 varieties, chances are you will find favorite ones of your own as you saunter around the garden.

#Iizaka Onsen Hanamono-no-Sato
#Flowering peach - Pink
#Flowering peach - Multi-colored type
#Flowering peach - Red
#White and pink

● Peach varieties and their flowering periods

*The flowering periods are given only as a yardstick. Periods may vary from year to year.

No.	Varieties	Mid-March	Late March	Early April	Mid-April	Late April	Early May
1	Red-flower bantou						
2	Genpei						
3	Scarlet-flower peach						
4	Kan-paku						
5	Kan-hitou						
6	Kiku-momo						
7	Kyo-maiko						
8	Kyo-sarasa						
9	Nakate-shiro						
10	Double-flowered bantou						
11	Yaguchi						
12	Drooping red flower						
13	Drooping Genpei						
14	Drooping Genpei-pink (no. 1)						
15	Drooping Hagoromo						
16	Drooping Sagami						
17	Drooping-white						
18	Terute Suimitsu						
20	Drooping Zansetsu						
21	Broom-type-pink						
22	Terute-beni						
23	Terute-hime						
24	Terute-pink						
25	Terute-white						
26	Juseitou (pink: single-flowered)						
27	Juseitou (pink: double-flowered)						
28	Juseitou (red: double-flowered)						
29	Juseitou (white: double-flowered)						
30	Silver Prolific						
31	Swatow						
32	Tsukuba #2						
33	Unryutou						
34	Ohio-momo						
35	Yama-momo (No-momo)						
36	Smooth-stone peach						
37	Ohatsu-momo						
38	Tenshin Suimitsutou						
39	Okinawa						
40	Tsukuba #1						
100	Hossudai						

Upright Drooping Broom-type Dwarf Others

● Tree shape types

Upright Tachi-sei

Varieties whose branches tend to grow upright.

Drooping Shidare-sei

Varieties whose soft, long branches droop.

Broom-type Houki-sei

Varieties that grow like an upside-down broom.

Dwarf Wai-sei

Varieties with a tree size smaller than other varieties.

Good manners while you enjoy taking photos

Do not pick any blossoms or break off branches. Eat or drink only at designated areas. No garbage bins are provided within the garden, so take any trash with you when you leave. When visiting the garden with your pet, make sure it is on a leash.



As I overlooked, I could see the Iizaka Onsen hot-spring town spreading beyond the blossoms of flowering peaches. What a sense of harmonious openness! The weather was just perfect. Now I'll try going a little way further to Lake "Moniwakko", a manmade lake behind the Surikami River Dam, to enjoy canoeing and camping.

#Iizaka Onsen Hanamono-no-Sato
#Surikami River Dam Lake "Moniwakko"
#"Moniwakko"



It looked as if the broom-type flowering peaches were trying to reach the blue sky. Seen from a distance, the white flowering peach trees looked just like they were covered with silver frost, exuding a stately atmosphere. The captivating clarity of the sight left me almost speechless.

#Iizaka Onsen Hanamono-no-Sato
#Flowering peach - White
#Flowering peach - Broom-type



Full-figured double-flowered peaches soothed me with their white blossoms and pleasant fragrance. On the way back from here, I can visit the Former Horikiri Residence to refresh myself with the hot-spring waters of a foot bath and hand bath.

#Iizaka Onsen Hanamono-no-Sato
#Flowering peach - White
#Former Horikiri Residence
#Historic structure
#Foot bath and hand bath